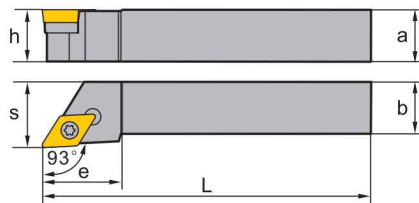
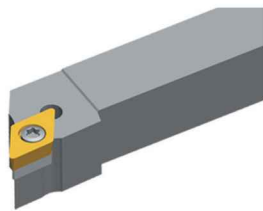


DC** holder (external) S-Clamping

SDJCR/L Kr: 93°



Right hand style

Article	*	Stock		Dimensions [mm]						Inserts
		R	L	a	b	L	h	s	e	
SDJCR/L1010E07	•	•	•	10	10	70	10	12	15	DC**0702**
SDJCR/L1212F07	•	•	•	12	12	80	12	16	15	DC**0702**
SDJCR/L1616H07	•	•	•	16	16	100	16	20	18	DC**0702**
SDJCR/L1616H11	•	•	•	16	16	100	16	20	24	DC**11T3**
SDJCR/L2020K11	•	•	•	20	20	125	20	25	24	DC**11T3**
SDJCR/L2525M11	•	•	•	25	25	150	25	32	29	DC**11T3**
SDJCR/L3225P11	•	•	•	32	25	170	32	32	29	DC**11T3**

• Ex stock ○ On demand

* With internal cooling

Spare parts

	Insert	DC**0702**	DC**11T3**
		h	h
	Screw	I60M2.5×6.5 (1.0 Nm)	I60M3.5×12 (2.7 Nm)
	Screw (shim)		SM5×8.65XA
	Shim		D11BS
	Wrench (screw)	WT07IP	WT15IP
	Wrench (shim)		WH35L

Insert

Finishing	Medium Cut	Roughing	Alum Machining	Cast Iron	PCBN/PCD
A126	A127	A129	A129	A129	A184

System code > A228

Grade selection > A42

Technical info > A501

Cutting data > A366