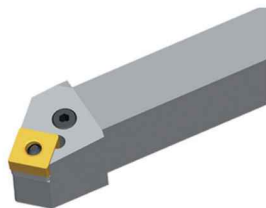
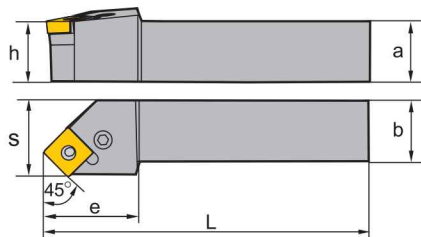


SN** holder (external) P-Clamping

PSSNR/L Kr: 45°



Right hand style



Article	*	Stock		Dimensions [mm]						Inserts
		R	L	a	b	L	h	s	e	
PSSNR/L1616H09	●	●		16	16	100	16	20	25	SN**0903**
PSSNR/L2020K12	●	●		20	20	125	20	25	30	SN**1204**
PSSNR/L2525M12	●	●		25	25	150	25	32	30	SN**1204**
PSSNR/L3232P12	●	●		32	32	170	32	40	40	SN**1204**
PSSNR/L2525M15	●	●		25	25	150	25	32	30	SN**1506**
PSSNR/L3232P15	●	●		32	32	170	32	40	40	SN**1506**
PSSNR/L3232P19	●	●		32	32	170	32	40	40	SN**1906**
PSSNR/L4040S19	●	●		40	40	250	40	50	50	SN**1906**
PSSNR/L4040S2507	●	●		40	40	250	40	50	50	SN**2507**
PSSNR/L4040S2509	●	●		40	40	250	40	50	50	SN**2509**

● Ex stock ○ On demand

* With internal cooling

Spare parts							
	Insert	SN**0903**	SN**1204**	SN**1506**	SN**1906**	SN**2507**	SN**2509**
	h	16	20-32	25-32	32-40	40	40
	Knee lever	L3	L4	L5	L6	L8	L8
	Screw		LEM8×21 (10.2 Nm)	LEM8×25 (10.2 Nm)	LEM10×27 (16.6 Nm)		
	Screw	LEM6×13.4A (7.0 Nm)				LEM12×36A (25.2 Nm)	LEM12×36A (25.2 Nm)
	Shim	S09AP	S12AP	S15AP	S19AP	S25AP	
	Shim						S25AP-09
	Shim pin (shim)	SP10	SP4	SP5	SP6	SP8	SP8
	Wrench	WH25L	WH30L	WH30L	WH40L	WH50L	WH50L

Insert				
Finishing	Medium Cut	Roughing	Cast Iron	PCBN/PCD
A73	A73	A78	A84	A162

System code > A228

Grade selection > A42

Technical info > A501

Cutting data > A366