



MOLETEADORES POR CORTE CUT-KNURLING TOOLS



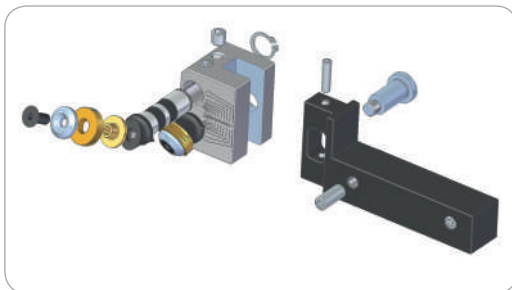
MF 21

+ Características

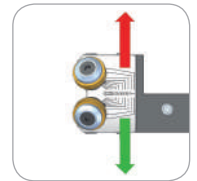
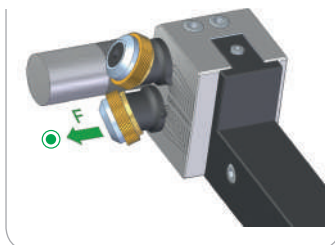
- Recomendado para moleteados tipo RGE
- Ajuste de las moletas según diámetro a moletear mediante escala graduada (Fig. 2)
- Cabeza ajustable en altura para el alineamiento de las moletas (Fig. 1)
- Cabeza reversible para trabajar a derechas o izquierdas (Fig. 3)
- Ejes de HSS+TIN
- Ajuste del ángulo de ataque mediante tornillos integrados en el mango

+ Features

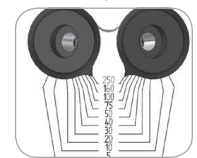
- Recommended for RGE type knurling
- Easy setting to the workpiece diameter by means of a graduated scale (Fig. 2)
- Up & down tool head alignment for knurls centering (Fig. 1)
- Tool with reversible head able to fit on left-hand or right-hand lathes (Fig. 3)
- HSS+TIN bushing
- Adjustment of tool clearance angle by threaded studs integrated in the shank



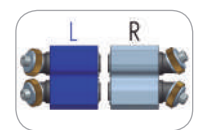
+ Avance Feed



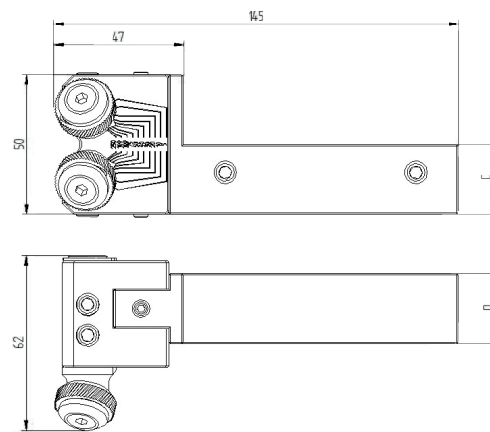
(Fig. 1)



(Fig. 2)



(Fig. 3)



+ Formas de moleteados realizables Feasible knurling forms

	R RGE 30°	R RGE 45°
Tipo de moleteado Knurling form		
Con moleta tipo With knurl type	AA + AA	BL15° + BR15°
Avances permitidos Allowed feeds	F	F

R Moleteados recomendados | Recommended knurling

Herramienta Tool							
Código Code	Referencia Reference	Versión Version	Capacidad Capacity	Moleta Knurl	C	D	Kg
01101900	MF 21.55.3/4"	R+L	Ø 5 ÷ 250	21.5x5x8	19.05	25	1.4
01102100	MF 21.55.1"	R+L	Ø 5 ÷ 250	21.5x5x8	25.4	25	1.4
01100500	MF 21.55.20	R+L	Ø 5 ÷ 250	21.5x5x8	20	25	1.4
01100700	MF 21.55.25	R+L	Ø 5 ÷ 250	21.5x5x8	25	25	1.4

Repuesto Spare Part		
Código Code	Referencia Reference	
01985700	EAT 21.55	